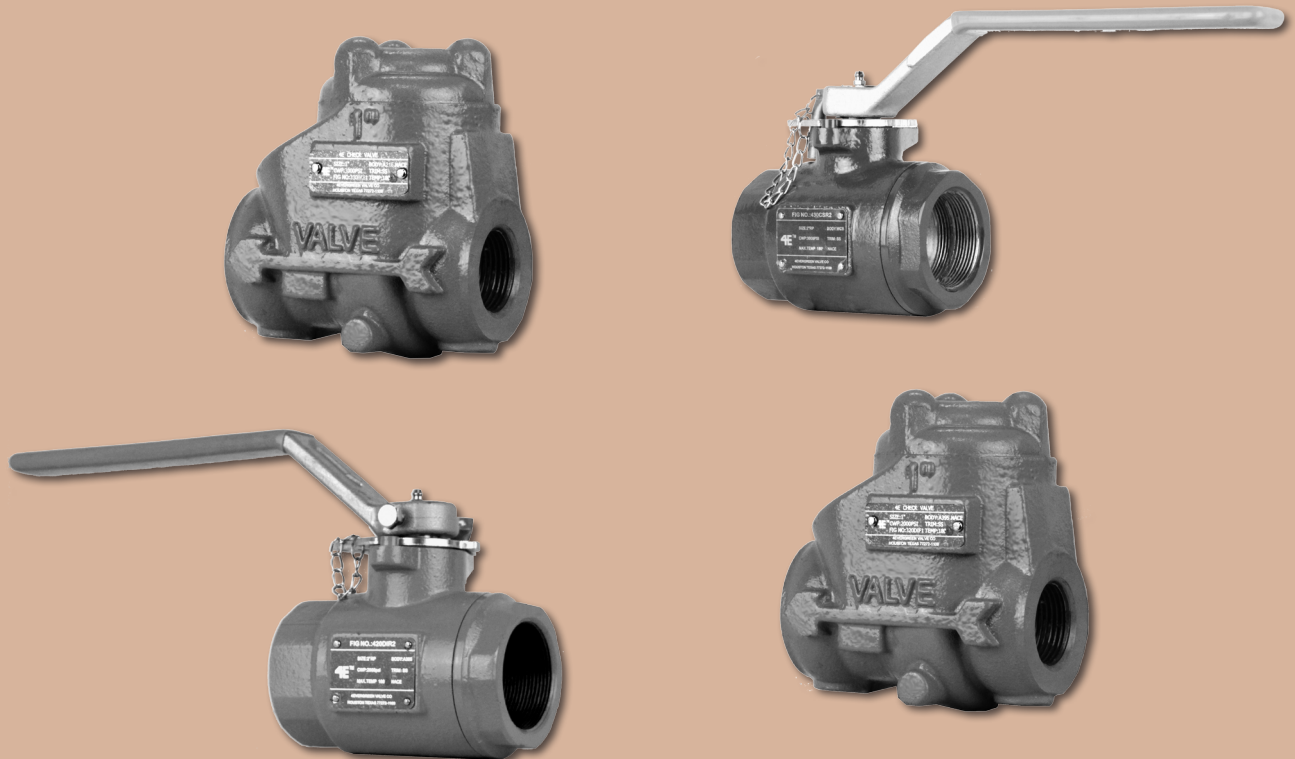




OILFIELD PRODUCTS

2000 PSI - 5000 PSI • CHECK & BALL



4E Valve



4E Valve is a Texas Corporation Company located in Stafford, TX. Since 1993, 4Excellent Quality, 4Extraordinary Service, 4Expediant Delivery and 4Extensive Inventory is what many Industries have counted on for over decades 4E Valve. Our World-Wide Distributor Network which will be there for anyone who represent a Reliable Source of 4E Valve Products.

For Excellent Quality, 4E's API Certified manufacturing facilities are dedicated to exceeding applicable API, ANSI, ASTM and other industry standards. Our products come with a vigilant quality assurance program and Liability Insurance. 4E monitors its products from scratch to finish. And Our commitment to quality does not end at our factories where all 4E valves are tested in accordance with API 598. 4E scrutinizes material test reports and maintains an MTR Data Base System. Furthermore, 4E valves are selected periodically to undergo full non-destructive and destructive testing in accordance with ASTM A703 and API 598 at an independent laboratory to insure product integrity.

For Extraordinary Service, our trained professionals are ready to provide immediate answers to your inquiries. 4E strives to quote within the hour of receiving large inquiries via email, fax or any means of communication.

For Expediant Delivery, 4E dispatches valves from stock within 24 hours after placement of order.

For Extensive Inventory, 4E maintains a significant inventory of valves in Houston, TX and our products are available from 4E distributors and agents in the the United States, North America and overseas.

4EXCELLENT
4EXTRAORDINARY
4EXPEDIANT
4EXTENSIVE



4E factory pressure testing

4E Quality Commitment

Our commitment to quality does not end at our factories where all 4E valves are tested in accordance with API 598. 4E scrutinizes material test reports and maintains an MTR Data Base System. Furthermore, 4E valves are randomly selected periodically to undergo full non-destructive and destructive testing in accordance with ASTM A703 and API 598 at an independent laboratory to insure product integrity.

All 4E Manufactured Valves Come with General Liability Coverage.

Order 4E Products by Figure Number

FIG.

TYPE	PRESSURE	BODY MATERIAL	(Description)	TRIM	END CONNECTION	SUFFIX LETTERS Optional	PIECE
1 = GATE OSY	1 = 150	WCB = A216 Gr WCB	- CAST CARBON STEEL	1 = 410	F = FLANGED	FP = FULL PORT	1P = 1 PIECE
2 = GLOBE OSY	2 = 125	AC5 = A217 Gr C5	- CAST ALLOY STEEL (5Cr,0.5Mo)	2 = 304	J = RTJ	RP = REGULAR PORT	2P = 2 PIECES
3 = SWING CHECK	3 = 300	WC6 = A217 Gr WC6	- CAST ALLOY STEEL (1.25Cr,0.5Mo)	3 = F310	B = BUTTWELD	FB = FLOATING BALL	
4 = BALL	4 = 400	LCB = A352 Gr LCB	- CAST LOW TEMP. CARBON STEEL	4 = HARD 410	S = SOCKET WELD	TM = TRUMON MOUNT	
5 = LIFT CHECK	5 = 250	LC3 = A352 Gr LC3	- CAST LOW TEMP. 3.5 Ni STEEL	5 = HARDFACED	T = THREADED	FS = FIRE SAFE	
6 = NRS GATE	6 = 600	CF8 = A351 Gr CF8	- CAST 304 STAINLESS STEEL	5a = HARDFACED		GO = GEAR OPERATOR	
7 = ANGLE	8 = 800	C8M = A351 Gr CF8M	- CAST 316	6 = 410 and CuNi		PS = PPRESSURE SEAL	
8 = THRU	9 = 900	FGO = A105	- FORGED CARBON STEEL	7 = 410 and HARD 410		WB = WELDED BONNET	
9 = KNIFE	15 = 1500	FG5 = A182 Gr F5	- FORGED ALLOY STEEL (5Cr,0.5Mo)	8 = 410 and HARDFACED		BP = BY PASS	
B = BUTTERFLY	20 = 2000	LF2 = A350 Gr LF2	- FORGED LOW TEMP CARBON STEEL	8a = 410 and HARDFACED		ST = SOCKET WELD X THREADED	
	25 = 2500	F11 = A182 Gr F11	- FORGED ALLOY STEEL	9 = MONEL		ZZ = SPECIAL	
	30 = 3000	F04 = A182 Gr 304	- FORGED 304 STAINLESS STEEL	10 = 316			
	45 = 4500	F16 = A182 Gr 316	- FORGED 316 STAINLESS STEEL	11 = MONEL and HARDFACED			
	50 = 5000	CFE = A126 Gr B	- CAST IRON	12 = 310 and HARDFACED			
		DF3 = A395	- CAST DUCTILE IRON	13 = ALLOY 20			
		DF5 = A536	- CAST DUCTILE IRON	14 = ALLOY 20 and HARDFACE			
		BRZ = B61 B62	- BRONZE	15 = 304 and HARDFACED			
		ZZZ = SPECIAL		16 = 316 and HARDFACED			
				17 = 347 and HARDFACED			
				18 = ALLOY 20 and HARDFACED			
				19 = Bronze			



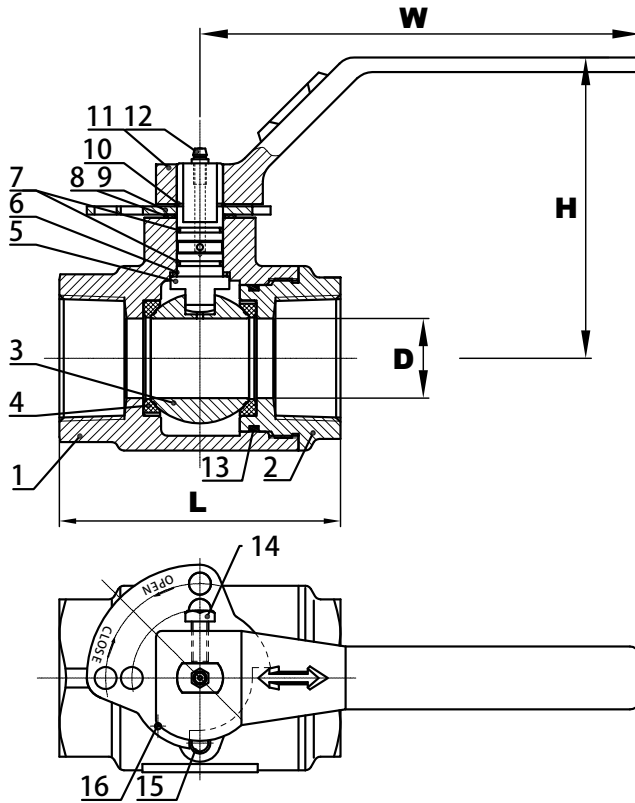
3000/5000 PSI CAST STEEL BALL VALVE

CSBV

FIG.# 4E-430WCB-T-FP/RP

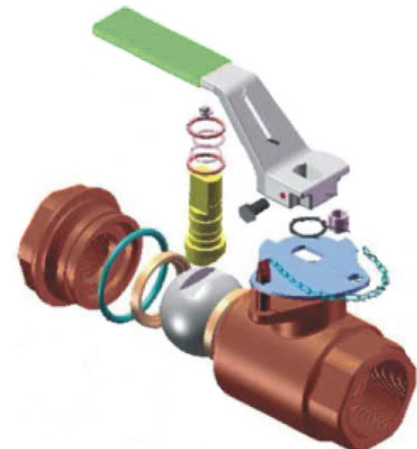
Lever Operated, Threaded
 Floating Ball, 3000/5000 W.O.G.
 Blow-Out Proof Stem
 Fire Safe Design
 Rugged Locking Device
 Grease Fitting
 NACE MR-0175 Compliant
 Inspect and Test: API 598

Nominal Pressure	3000	PSI
Shell Test (by Water)	4500	
Seal Test (by Water)	3300	
Seal Test (by Air)	60 ~ 100	
NPT end connection conforms to	ANSI B1.20.1 BS21 DN 259/2999	
Temperature Range	-10°C (14°F) ~ 180°C (356°F)	



MATERIAL LIST

No.	Part Name	Material
1.	Body	A216 WCB
2.	Bonnet	A216 WCB
3.	Ball	SS 304
4.	Seat	DELRIN
5.	Stem	SS 304
6.	Stem Washer	RPTFE
7.	Stem O-Ring	VITON
8.	Thrusting Bearing	PTFE
9.	Stop Collar	A194 2H
10.	Snap Ring	6150
11.	Handle	WCB
12.	Grease Zerk	SS 420
13.	Body Seal	VITON
14.	Handle Screw	Steel
15.	Stop Bolt	Steel
16.	Pin with Screw	Copper & Steel



DIMENSIONS & WEIGHT

SIZE	unit	1" FP CSBVFP25 3000 PSI	2" RP CSBVRP50 3000 PSI	2" RP CSBVRP51 5000 PSI	2" FP CSBVFP50 3000PSI	3" FP CSBVFP80 3000 PSI
D	inch	1	1.50	1.50	2.00	3.00
	mm	25	38	38	51	76
L	inch	4.00	5.51	5.51	6.02	8.74
	mm	102	140	140	153	222
W	inch	6.25	8.27	8.27	10.63	14.96
	mm	159	210	210	270	380
H	inch	3.19	5.67	5.67	5.87	7.05
	mm	81	144	144	149	179
WT.	lbs.	4.5	14	14	20	43
	kgs.	2.04	6.35	6.35	9.07	19.5

Weights are approximate and construction is subject to change without notice.

2000 PSI DUCTILE IRON BALL VALVE



DIBV - TANK VALVE

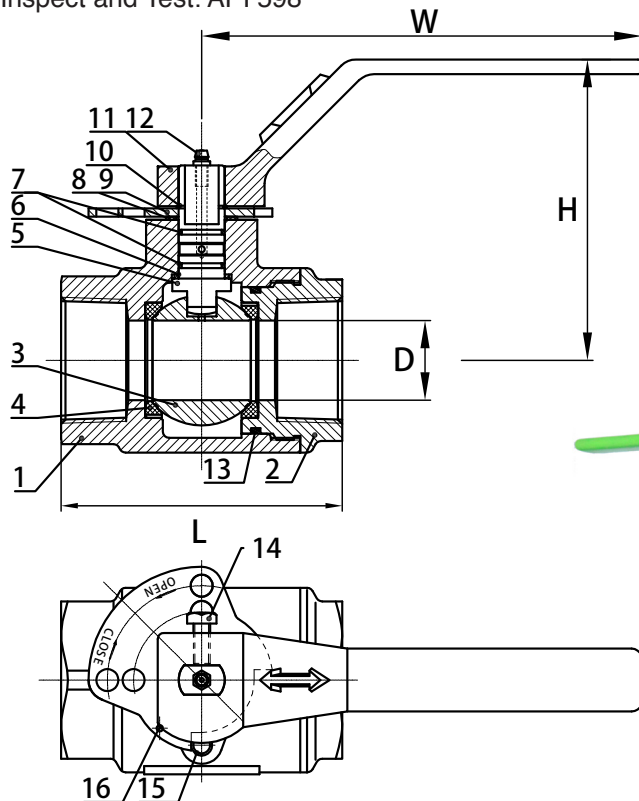
FIG.# 4E-420DF3-T-FP/RP

Lever Operated, Threaded
 Floating Ball, RPTFE/DELTRIN Seat
 1000/1500/2000 W.O.G.
 Blow-Out Proof Stem
 Fire Safe Design
 Rugged Locking Device
 Grease Fitting
 NACE MR-0175 Compliant
 Inspect and Test: API 598

Nominal Pressure	2000	PSI
Shell Test (by Water)	3000	
Seal Test (by Water)	2200	
Seal Test (by Air)	60 ~ 100	
Threads conforms to	ANSI B1.20.1 BS21 DN 259/2999	
Temperature Range	-10°C (14°F) ~ 80°C (176°F)	

MATERIAL LIST

No.	Part Name	Material
1.	Body	A395
2.	Bonnet	A395
3.	Ball	SS 304
4.	Seat	RPTFE
5.	Stem	SS 304
6.	Stem Washer	RPTFE
7.	Stem O-Ring	VITON
8.	Thrusting Bearing	PTFE
9.	Stop Collar	A194 2H
10.	Snap Ring	6150
11.	Handle	WCB
12.	Grease Zerk	SS 420
13.	Body Seal	VITON
14.	Handle Screw	Steel
15.	Stop Bolt	Steel
16.	Pin with Screw	Copper & Steel



DIMENSIONS & WEIGHT

SIZE	unit	3/4" FP DIBVFP20 2000 PSI	1" FP DIBVFP25 2000 PSI	1" RP DIBVRP25 2000 PSI	1-1/2" FP DIBVFP40 2000 PSI	2" FP DIBVFP50 2000 PSI	2" RP DIBVRP50 2000 PSI	2-1/2" FP DIBVFP65 2000 PSI	3" FP DIBVFP80 2000 PSI	3" RP DIBVRP80 2000 PSI	4" FP DIBVFP100 2000 PSI	4" RP DIBVRP100 2000 PSI
D	inch	0.79	1.00	0.79	1.50	2.00	1.50	2.52	3.00	2.00	3.94	3.00
	mm	20	25	20	38	51	38	64	76	51	100	76
L	inch	3.78	4.00	3.78	5.50	6.02	5.50	7.00	8.74	7.28	9.40	8.74
	mm	96	102	96	140	153	140	178	222	185	239	222
W	inch	6.25	6.25	6.25	8.28	10.63	8.28	10.63	15.00	10.63	15.00	15.00
	mm	159	159	159	210	270	210	270	380	270	380	380
H	inch	3.07	3.19	3.07	5.67	5.87	5.67	6.14	7.05	5.87	7.80	7.05
	mm	78	81	78	144	149	144	156	179	149	198	179
WT.	lbs.	4.05	4.41	3.97	9.92	16.76	10.89	20.94	42.99	18.96	54.90	40.79
	kgs.	1.84	2	1.8	4.5	7.6	4.94	9.5	19.5	8.6	24.9	18.5

Weights are approximate and construction is subject to change without notice.



3000 PSI CAST STEEL SWING CHECK VALVE

CSCV

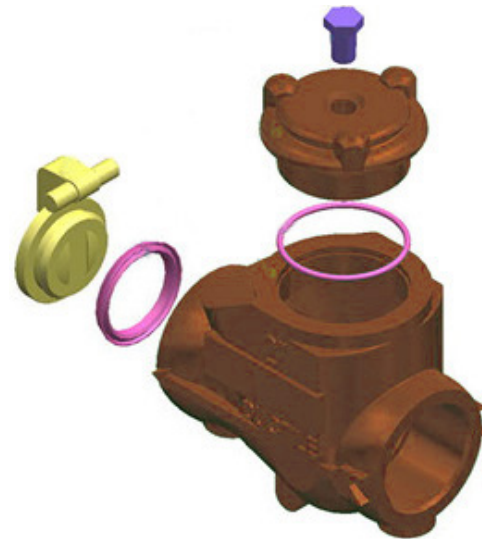
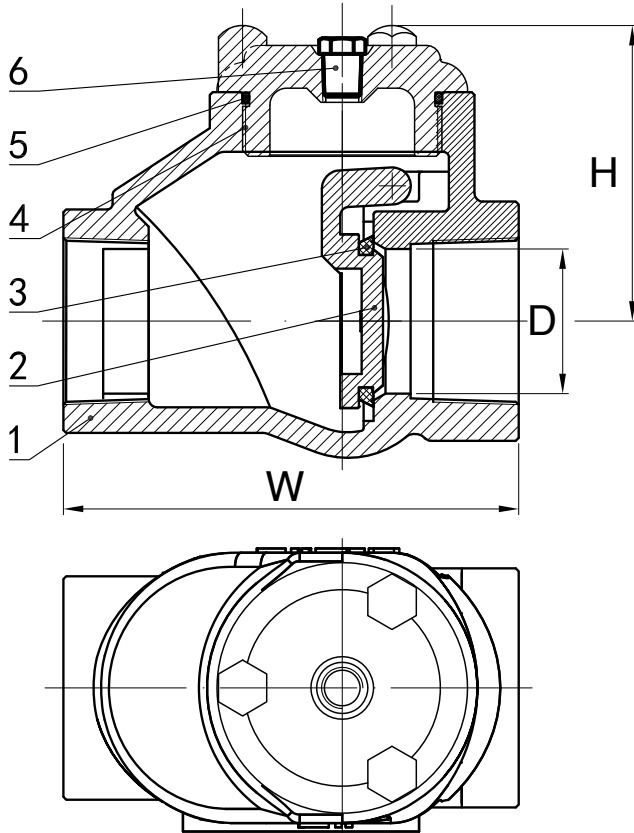
FIG.# 4E-330WCB-T

Cast Steel Body
 Swing Check
 Up to 3000 W.O.G.
 Full Opening
 NACE MR-0175 Compliant
 Groove End Customized

Nominal Pressure	3000	PSI
Shell Test (by Water)	4500	
Seal Test (by Water)	3300	
Seal Test (by Air)	60 ~ 100	
Threads conforms to	ANSI B1.20.1 BS21 DN 259/2999	
Temperature Range	-10°C (14°F) ~ 80°C (176°F)	

MATERIAL LIST

No.	Part Name	Material
1.	Body	A216 WCB
2.	Disk	CF8
3.	Seat	VITON
4.	Bonnet	A216 WCB
5.	Gasket	VITON
6.	Pipe Plug	Steel



DIMENSIONS & WEIGHT

SIZE	unit	1" FP	2" FP	2"-Long FP	3" FP	4" FP
		CSCV25 3000 PSI	CSCV50 3000 PSI	CSCVL50 3000 PSI	CSCV80 3000 PSI	CSCV100 3000 PSI
D	inch	1	1.98	1.98	3.03	3.98
	mm	25.4	50.8	50.8	77	101
W	inch	4.25	6.30	7.24	8.74	10.00
	mm	108	160	184	222	254
H	inch	3.23	4.09	5.35	5.35	7.79
	mm	82	104	136	136	198
WT.	lbs.	5.18	14.33	15.76	27.79	66.14
	kgs.	2.35	6.5	7.15	12.6	30



2000 PSI DUCTILE IRON SWING CHECK VALVE



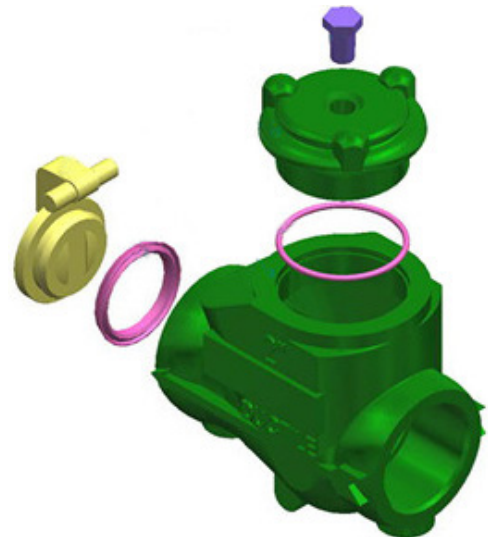
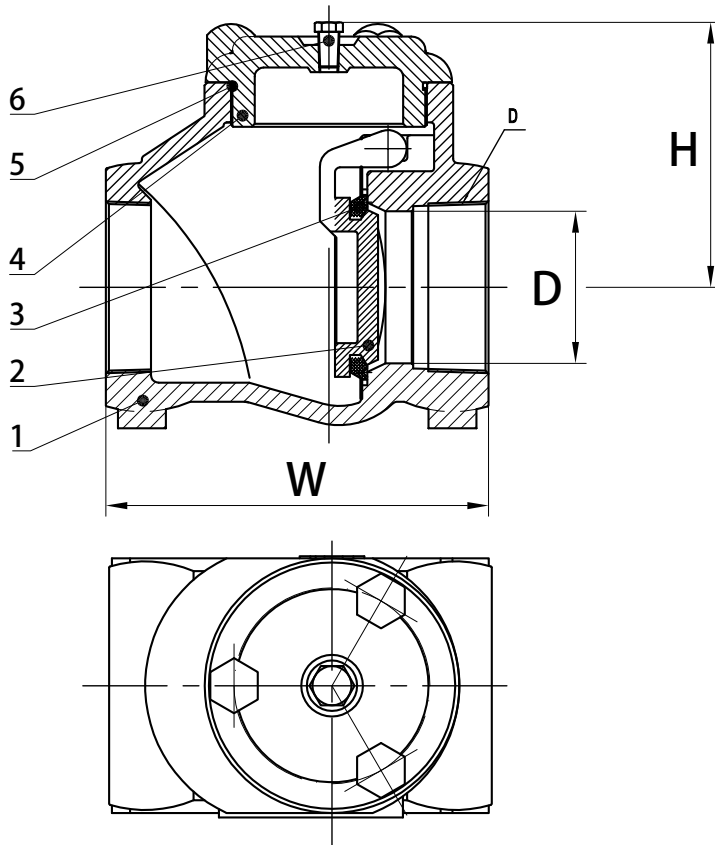
DICV

FIG.# 4E-320DF3

Ductile Iron Body
 Swing Check
 2000 PSI, 300 to 2000 W.O.G.
 Full Opening
 NACE MR-0175 Compliant
 Groove End Customized

Nominal Pressure	2000	PSI
Shell Test (by Water)	3000	
Seal Test (by Water)	2200	
Seal Test (by Air)	60 ~ 100	
Threads conforms to	ANSI B1.20.1 BS21 DN 259/2999	
Temperature Range	-10°C (14°F) ~ 80°C (176°F)	

MATERIAL LIST		
No.	Part Name	Material
1.	Body	ASTM A395
2.	Disk	SS 304
3.	Seat	VITON
4.	Bonnet	A395
5.	Gasket	VITON
6.	Pipe Plug	Steel



DIMENSIONS & WEIGHT						
SIZE	unit	1" FP DICV25 2000 PSI	2" FP DICV50 2000 PSI	2"-Long FP DICVL50 2000 PSI	3" FP DICV80 2000 PSI	4" FP DICV100 2000 PSI
D	inch	1	2	3.03	3.03	3.98
	mm	25.4	50.8	50.8	77	101
W	inch	4.25	6.30	7.33	8.27	10
	mm	108	160	186	210	254
H	inch	3.23	4.09	5.35	5.35	7.80
	mm	82	104	136	136	198
WT.	lbs.	6.06	10.58	14.11	27.56	58.42
	kgs.	2.75	4.8	6.4	12.5	26.5





OILFIELD VALVES

phone +1(281)494-4300 | fax +1(281)494-0090

WWW.4EVALVE.COM

**6907 Brasada Dr.
Houston, Texas 77085
U. S. A**

**P. O. Box 450809
Houston, Texas 77045
U. S. A.**

WARRANTY

LIMITED WARRANTY: 1. 4Evergreen Valve warrants to the original purchaser, for a period of one year from and after the date of delivery to the original customer, that its products will be free from defects in workmanship and materials, not caused or resulting from improper usage or application, improper installation, improper maintenance, repair, modification or alteration. In the event the original purchaser shall determine that a product purchased from 4E is defective in workmanship or materials, the customer shall notify the 4E Warranty Representative within 24 hours from such determination, followed by written notice to such effect within 7 days thereafter, addressed to: 4EVERGREEN VALVE CO., P.O. BOX 721109, HOUSTON, TX 77272-1109.

2. In the event 4E shall determine that the product is defective based upon such examination of the product which 4E may deem appropriate, 4E shall thereupon, at its sole option, cause the defective product to be (a) repaired, (b) replaced with a substantially identical product, or (c) accept the return of a defective product and refund the purchasing price to the original purchaser, but shall in no event bear any installation, reinstallation, engineering or other costs incurred in connection with repair or replacement.

3. Since 4E shall not provide engineering and/or suitability of application or installation services for a purchaser, the selection, suitability, installation and fitness of all products sold by 4E shall be deemed to have been determined exclusively by and within the resulting from the selection, application, suitability, fitness or installation of its products.

4. The foregoing constitutes the sole obligation of 4E with respect to defective products purchased from it and in no manner shall 4E assume or be liable for any other expenses, incidental or consequential damages, losses, lost profits, downtime or otherwise, whether directly or indirectly suffered, or in any other manner relating to or as the result of any defect or failure of any product that it may sell.

5. Except as otherwise provided herein, 4E MAKES NO WARRANTIES OR REPRESENTATION, WHETHER EXPRESS OR IMPLIED, OF ANY KIND WHATSOEVER WITH RESPECT TO GOODS AND PRODUCTS SOLD BY IT, INCLUDING WITHOUT LIMITATION, ANY WARRANTIES WITH RESPECT TO MERCHANTABILITY OR FITNESS FOR A PARTICULAR PURPOSE. NO PERSON IS AUTHORIZED TO GRANT OR EXTEND ANY WARRANTY OR REPRESENTATION ON BEHALF OF 4E OTHER THAN AS SET FORTH HEREIN.